



SXM CPC01

Passenger Counting Camera

**Instruction Manual**

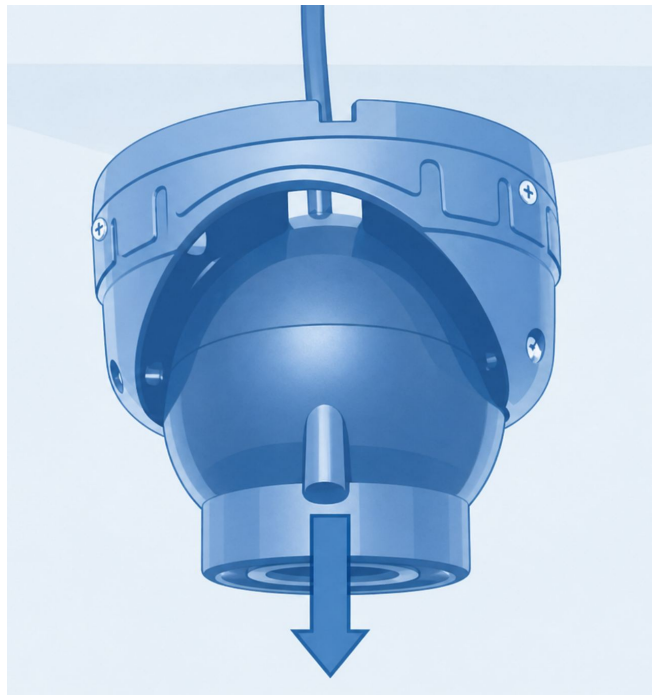
## 1. Product picture



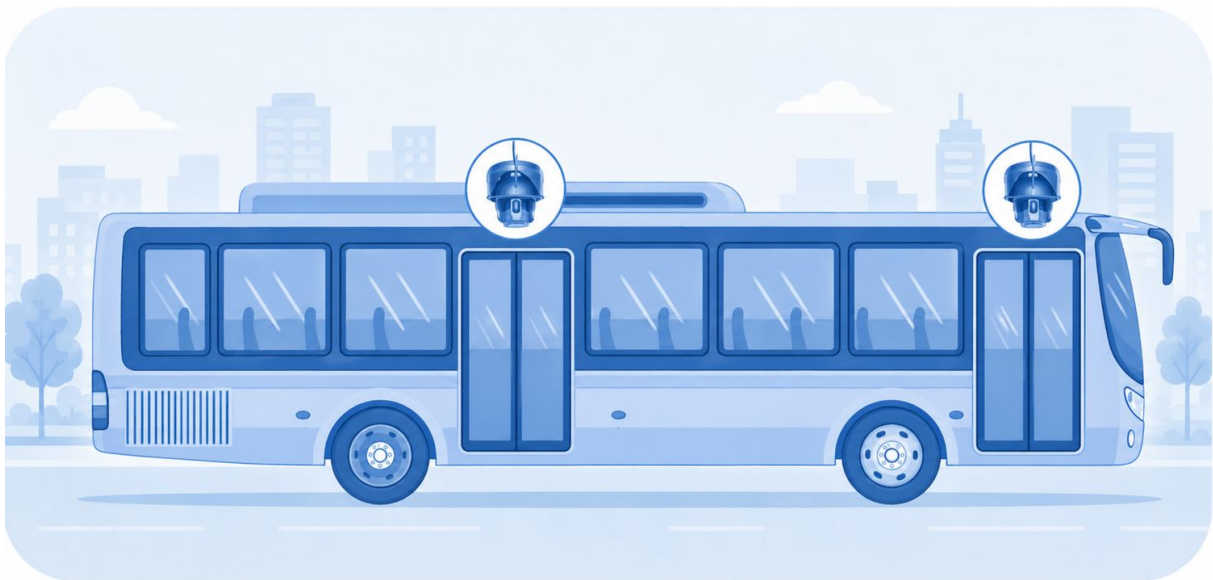
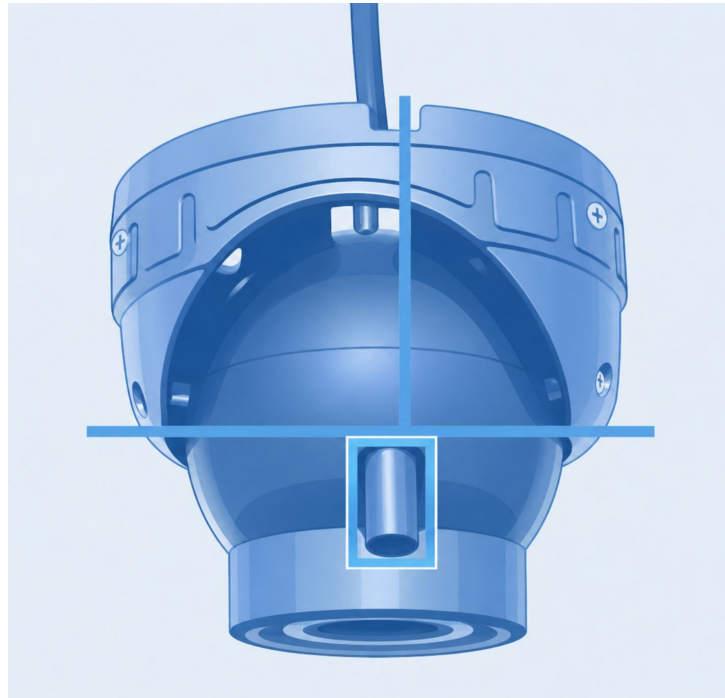
## 2. Installation and configuration

### Camera Installation

Step 1: Adjust the camera lens so that it points vertically downward, as shown in the following figure.



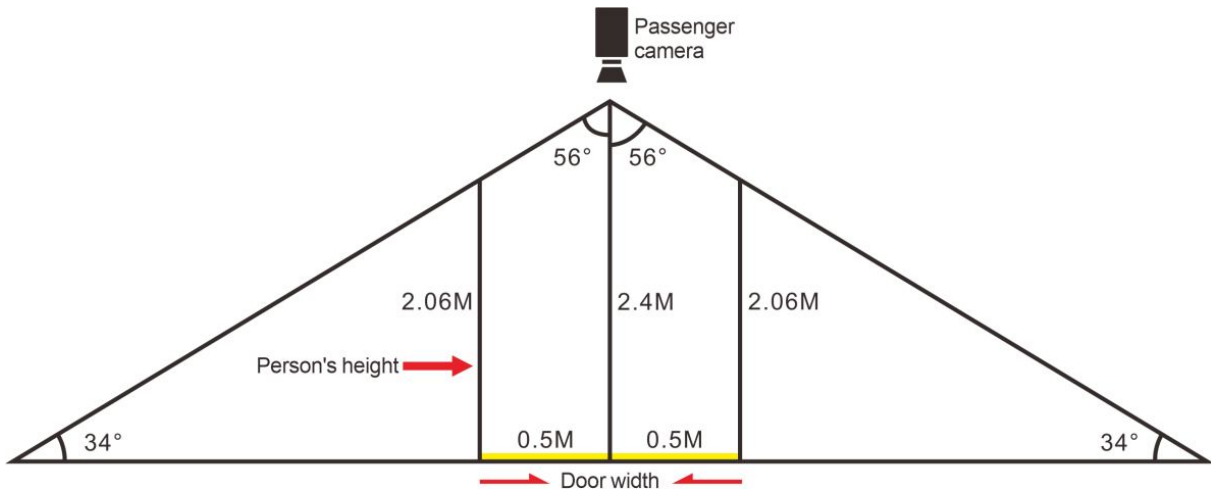
Step 2: Adjust the camera lens and position the blue section of the diagram in the center. As shown in the image, it must face toward the outside of the bus door.



Step 3: Secure the camera in the center position, directly above the bus door, and make sure the height from the ground is between 2.35 m and 2.45 m, as shown in the figure below.



### HFOV Camera Instructions



**Note:**

- When installing the camera at the rear door, if it cannot be placed at the top (due to interference from lights or other elements), first adjust the camera angle, making sure the lens is oriented vertically downward and in accordance with the instructions in Step 2. Then proceed with installation on the inclined surface of the rear door.
- If the height of the vehicle body is insufficient, especially in units with steps, verify that the distance between the upper step and the ceiling is not less than 2.1 m. Otherwise, inconsistencies may occur in the counting data.

**Attention:**

The counting algorithm will only be accurate if the camera is installed at least 15 cm above passengers' head height.



The passenger counting camera for the front door must be connected to the MDVR AV IN3 CH input using a video extension cable.

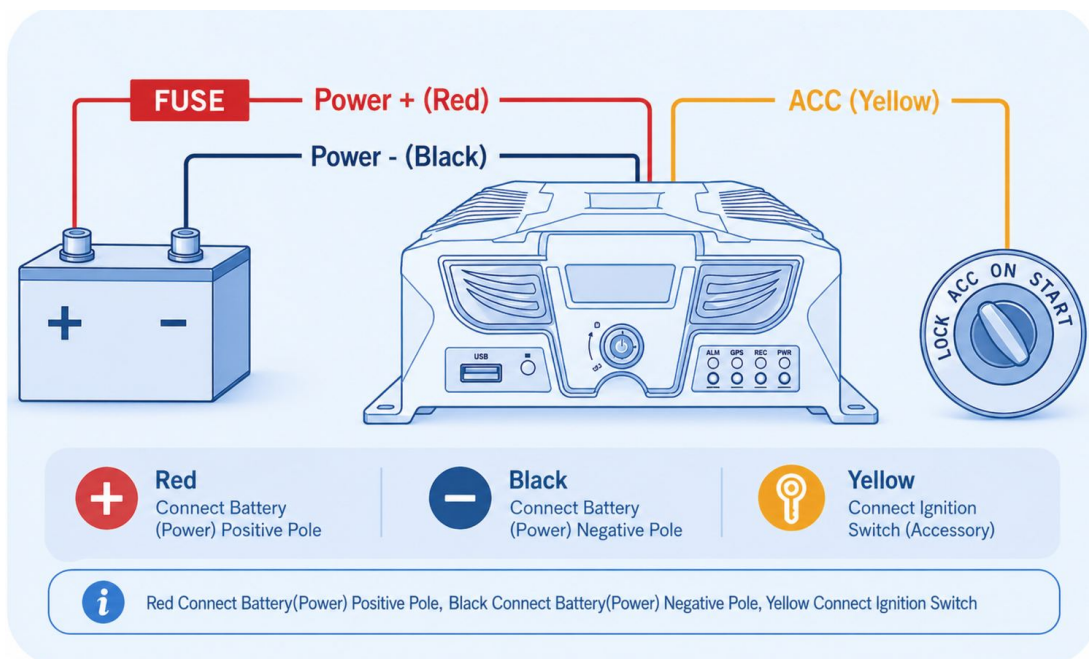
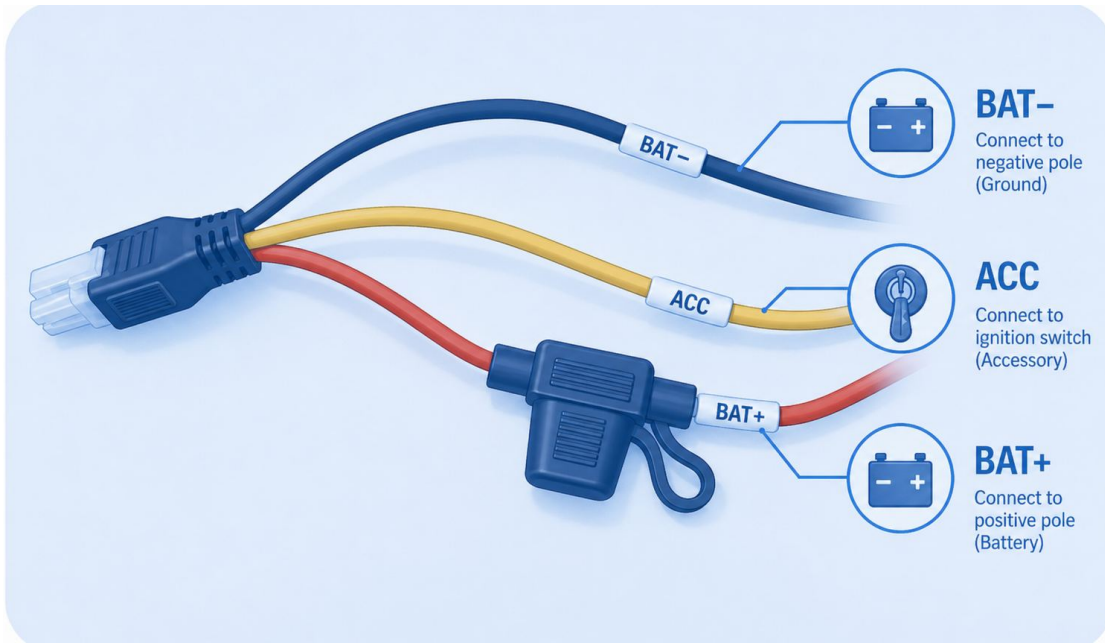
The camera corresponding to the rear door must be connected to the MDVR AV IN4 CH input, also using a video extension cable.

Additional cameras may be installed according to specific surveillance requirements.



### MDVR Installation

Step 1: Connect the MDVR power supply as follows: connect the red wire (BAT+) to the positive terminal of the vehicle battery, the black wire (BAT-) to the negative terminal, and the yellow wire (ACC) to the ignition switch (vehicle key). This is shown in the following figure.



Step 2: Configure the ACC delayed shutdown function in the MDVR menu, setting a delay time of at least 60 minutes, as shown in the following figure.

### Camera Viewing Angle Confirmation

After installing and connecting the camera, MDVR, and monitor, accurately adjust the lens angle to ensure a clear, sharp, unobstructed image. Also verify that the yellow area is centered in the image.

Attention: After completing the installation, view the corresponding passenger counting channels in full screen (channel 3 for the front door and channel 4 for the rear door) and verify that the graphics are displayed consistently.

Use the remote control to enlarge the counting channel image, take a photo, and verify the correct installation position.

Use the yellow box shown below as a reference.

The screenshot shows the configuration interface for the Siera camera. The top navigation bar includes 'Setup', 'FileSearch', 'Information', and 'Maintenance'. The left sidebar contains 'DevInfo', 'SysTime', 'DstSet', 'Power', and 'User'. The main area displays the following settings:

- Power Mode:** ACC (highlighted with a red box)
- Delay Off(min):** 60 (highlighted with a red box)
- Timer:** 06:00:00 - 23:00:00 (highlighted with a blue box)
- 12VPWRProtect:** OFF, 9.0 (highlighted with a green box)
- 24VPWRProtect:** OFF, 21.0 (highlighted with a green box)
- TimeRestart:** OFF, 00:00:00 (highlighted with an orange box)

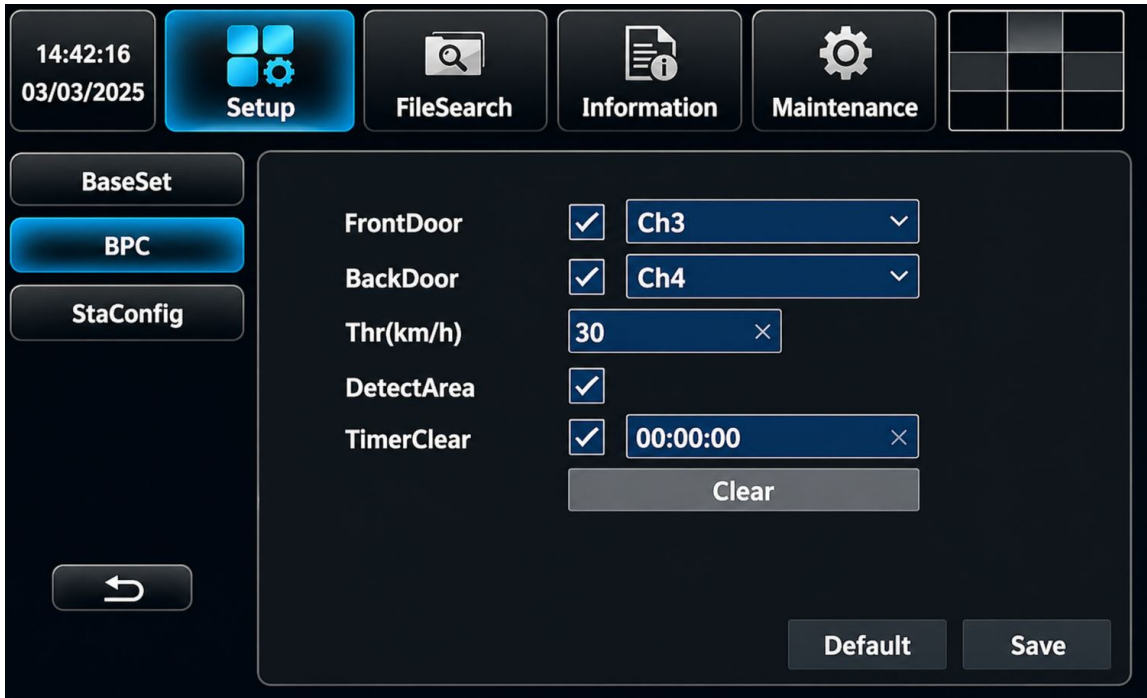
Callout boxes on the right provide descriptions for these settings:

- Power Mode:** Set the power on/off mode.
- Delay Off (min):** Set the delay time (in minutes) before the device powers off after ignition is off.
- Timer:** Set the time period during which the device is allowed to power on.
- 12VPWRProtect:** Set the protection voltage value for 12V battery.
- 24VPWRProtect:** Set the protection voltage value for 24V battery.
- TimeRestart:** Set the time for automatic restart after the device powers off.



In addition, the size of the passenger statistics box can be adjusted using the remote control.

## Passenger Counting Configuration Menu



- After verifying that the image is displayed correctly on the screen, adjust and tighten the positioning screws located on both sides of the camera to prevent any movement, as shown in the corresponding figure.





[www.sieraelectronics.com](http://www.sieraelectronics.com)

Product may vary from description.

Designed by Siera / Assambled in PRC  
Siera is a trademark of Siera Holding Group

902 92138